

WOOD TECHNOLOGY
METAL TECHNOLOGY
ASSEMBLY INSTRUCTIONS
FOR MODEL CM-V50

Thank you for purchasing the CM-V50 We are confident that you will enjoy its functionality and beauty for years to come. Assembly is simple, so take your time, read the instructions completely, then begin. When assembling this unit, we suggest you have a partner present in that some pieces are long and cumbersome making them difficult to handle individually.

1. Separate and identify the parts and hardware. See diagram 1

2. Screw 6 cambolts "CB" into under side of top panel "NA" and top side of bottom panel "NB". (Note that panel NB has pilot holes on both sides, panel NA does not.) Be sure to look at inset diagram 3 showing that cambolts should be screwed in until the shoulder barely rests against the flat surface of the wood. You may gently tap the cambolts if needed to insure they are perpendicular to the wood surface. *The cambolts must be straight before proceedings*

3. Screw three cambolts "CB" into the right and left side panels. See diagram 2. Now insert 3 cambolts into the bottom of center shelf "CF".

4. Attach center shelf to side panels "NE" by inserting the cambolts into the pilot holes in the ends of the shelf, then insert a camlock into each corresponding "CL" pilot hole and turn clockwise, about a half a turn. *Should your camlocks not turn easily, check the depth of your cambolts. Adjusting them just a sixteenth of an inch can make a difference in its head centering properly in the camlock hole.* Now attach the center panel to the underside of the center shelf using the same method. **(Note the distance from the edge of panel to the shelf pin holes, the end with the smaller distance attaches to the center shelf)**

5. Now, with your partner's help, place the subassembled unit onto the cambolts of the base panel. Check that all cambolts line up into holes in the three vertical panels before pushing down and seating the sub-assembly. Place camlocks into the 9 pilot holes in the two end panels and the center panel WITH ARROWS POINTING UP, and turn clockwise, about a half a turn. Place top panel on top of sub-assembled using the same method.

6. With your partner's help, flip unit over so that the bottom is now facing upward. Be sure to do this on a carpeted floor or a large rug so as to avoid scratching the top. Use the screws supplied "S9" and screw in all six casters "CST-P".

7. Again, with your partner's help, flip unit back side up and *front side* down against a *carpeted floor*. You may now nail in back panels "XH1" and "XF2". Note: The smaller Back panel goes on the top section. **BE SURE THAT THE BLACK SIDE OF BACK PANEL FACES THE FRONT OF THE UNIT** Use the panel nails "PN" and while making sure your back is perfectly positioned, tack the nails through the back panels and into the back of the main unit spacing them approximately every 5 inches. (see diagram)

8. Push shelf pins "SP" into place in side panels positioning them at a height that works best with your particular equipment. Place shelves "XF" onto shelf pins.

9. You may now push cam caps "XJ" over camlocks for a neat finished look. (this step for oak finish only)

Congratulations! You are finished. To care for your new furniture, we recommend dusting with a soft cotton cloth. Twice a year, use a small amount of fine furniture polish to keep the lustre of your CM-V50 looking like new!

Parts List

<u>Item</u>	<u>Description</u>	<u>Qty.</u>	<u>Item</u>	<u>Description</u>	<u>Qty.</u>
NB	Base Panel	1	CL	Cam Lock	24
NA	Top Panel	1	CB	Cam Bolt	24
NER	Right Side Panel	1	XI	Cam Caps*	24
NEL	Left Side Panel	1	PN	Panel Nails	24
NC	Center Panel	1	S9	Screws	24
XF	Shelves	2	SP	Shelf Pins	8
XH1	Cabinet Back	1	CST-PCasters	6	
XH2	Cabinet Back	1	* cam caps are supplied with oak finish only		
CF	Center shelf	1			

If any parts are MISSING or DAMAGED in this package, circle the item(s) needed on the parts list. Note finish if necessary. Print your name, address, and phone number in the area below and mail to Wood Technology, P.O. Box 130, Conover, NC 28613. Or call 888.445.5520 or fax 828.464.8046

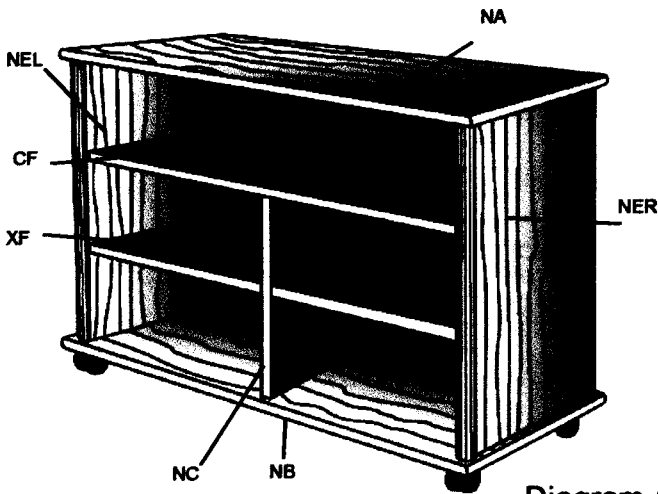


Diagram 1

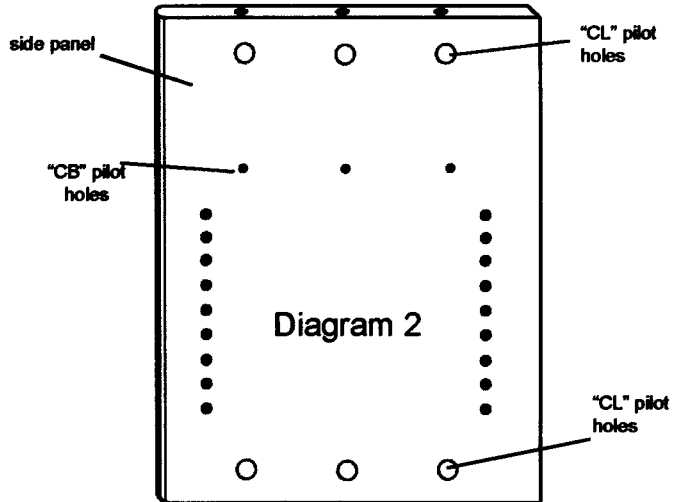


Diagram 2

Additional shelves (XF) can be purchased for \$19.95 each + shipping and handling.

Glass kit now available!
Part #V40-GK

Cam Bolt Installation

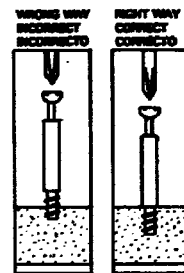


Diagram 3